

# PRESSURE SWITCH FOR NITROGEN

## SPECIFICATIONS:

Pressure switches for the medical gas alarm system shall incorporate a U.L. Listed single double throw snap-action switching element. Electrical connections are made through a 1/2" conduit connection to screw terminals on the switch. The switch may be wired normally open or normally closed. Electrical rating shall be 10 amperes at 120 volt AC.

The pressure switch shall be tested at 1000 psi with an adjustable range of 10 to 230 psi decreasing pressure or 11 to 250 psi increasing pressure. Provide one switch for high pressure alarm signal and one switch for low pressure alarm signal.

The enclosure shall be a Nema 4 water tight housing with a 1/4" NPT gas service line connection on bottom and a 1/2" NPT conduit hub on top.

The Pressure Switch is **UL** Listed and **CSA** Approved.



## FEATURES:

- Typically used for clinical nitrogen systems.
- Instrument quality snap-action switch.
- Normally open or normally closed contacts.
- Nema 4 water-tight housing with mounting brackets.
- 10-250 psi range.

## PROJECT:

---

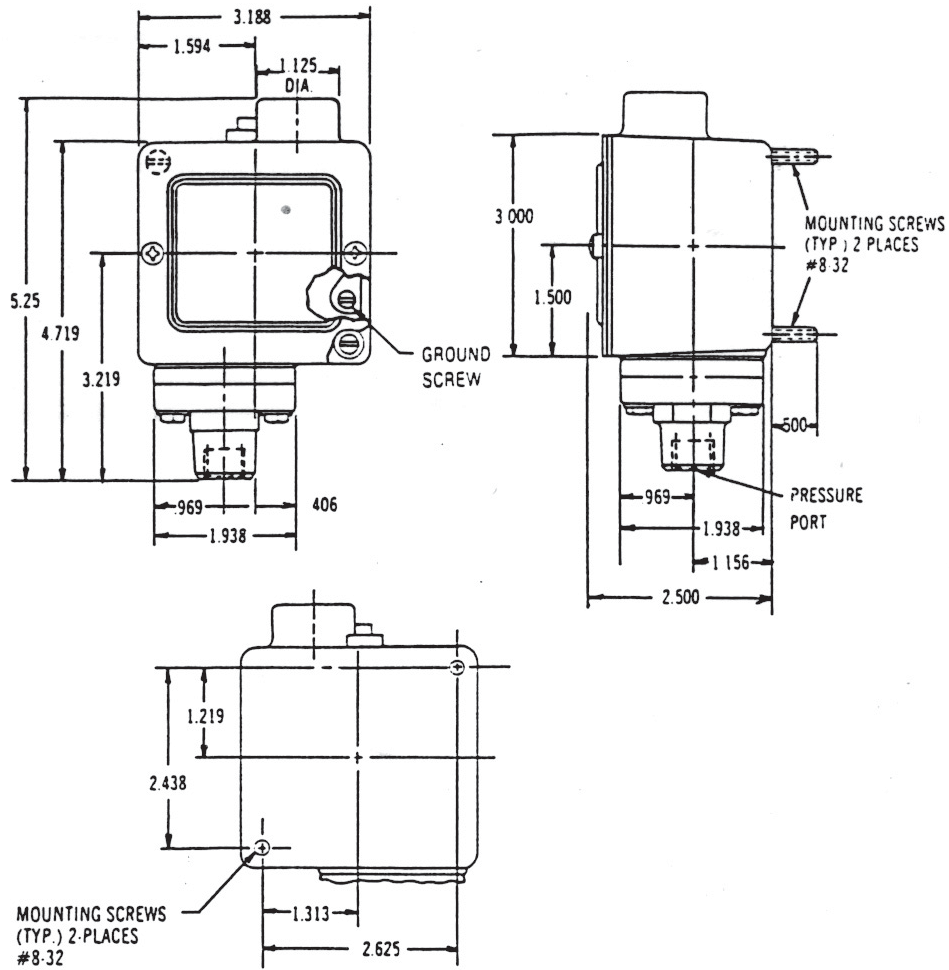


---



---

# DIMENSIONS



# MODEL NUMBERS

**M-PRSW-NIT** = Pressure Switch for use with Nitrogen

# DISTRIBUTED BY: