



SECURITY ZONE VALVE BOX ASSEMBLY

SPECIFICATIONS:

Zone valve boxes shall be an Amico **Alert-1** series.

Each recessed zone valve box shall consist of the following components: A steel valve box which can house one to six shut-off ball valves with tube extensions and a stainless steel door assembly.

The stainless steel door frame assembly shall be constructed of 14 gauge stainless steel and shall be mounted to the back box assembly by standard number 6-32 screws as provided. The door shall be spot-welded to the frame with a stainless steel hinge. Access to the box shall be by means of a lock and key.

The valve box shall be constructed of 18 gauge steel complete with a baked white enamel finish. Affixed to the opposing sides of the box will be two adjustable steel brackets for the purpose of mounting the box to the structural support. The steel brackets shall accommodate various finished wall thicknesses between 3/8" [9.5 mm] and 1 3/16" [30 mm] and shall be field adjustable.

The Valve shall be a 3 piece ball-type design with a bronze body and chrome plated brass ball for sizes 1/2" to 3". Seats shall be Teflon (TFE) and seals Viton for 1/2"-3". A blow-out proof stem shall be used and the valve shall have a minimum pressure rating of 600 psi [4,137 kPa].

Valves shall be operated by a lever-type handle requiring only a quarter turn from a fully open position to a fully closed position.

All valves shall be equipped with type "K" washed and degreased copper pipe stub extensions of sufficient length to protrude beyond the sides of the box.

The entire valve body and pipe stubs shall be chrome plated to a minimum of 1" [25 mm] beyond the sides of the back box, but in no instance shall the chrome plating be



extended to the ends of the pipe stubs. All pipe stub extensions shall be supplied with suitable plugs or caps to prevent contamination of the assembly prior to installation.

Each valve shall be supplied with an identification bracket bolted directly onto the valve body for the purpose of applying an approved medical gas identification label. A package of labels shall be supplied with each valve box assembly for application by the installer.

The Valve shall be **UL** Listed.

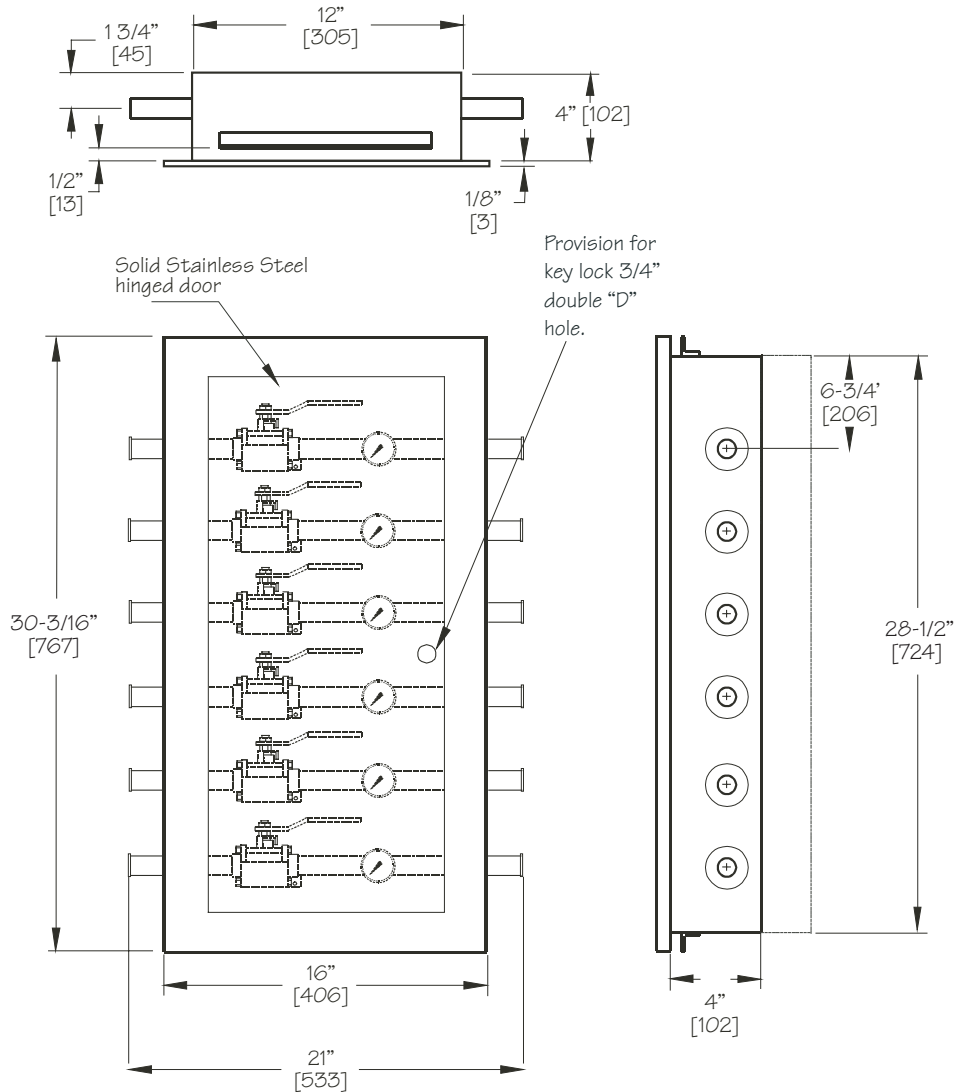
Amico products comply with NFPA-99.

PROJECT:



D I M E N S I O N S

inch
[mm]



*NOTE: All valves are to be ordered separately.

A Series
ALERT-1

M O D E L N U M B E R S

V-X-DOOR-Q-SS Q represents the quantity of valves:
 1 valve = 01
 2 valves = 02
 3 valves = 03
 4 valves = 04
 5 valves = 05
 6 valves = 06

D I S T R I B U T E D B Y :