

Architectural Products

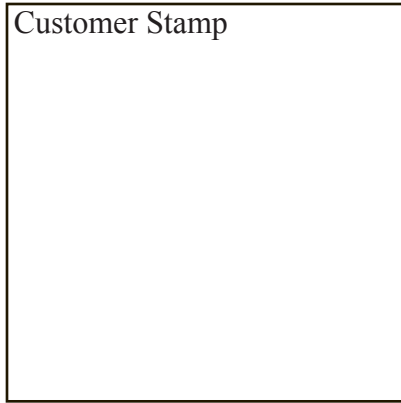
Submittal Package



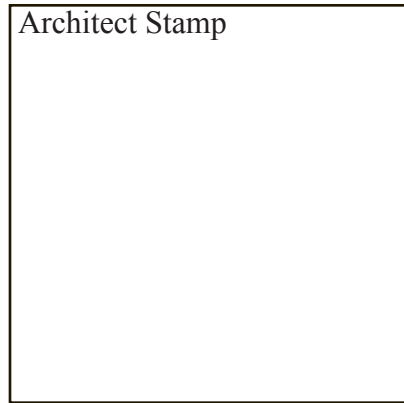
Prepared For:
Prepared By: Amico /
Date:

Transmittal Page

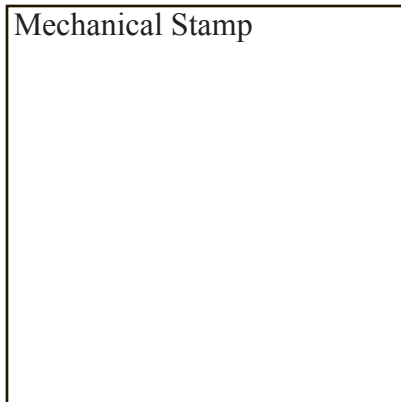
Customer Stamp



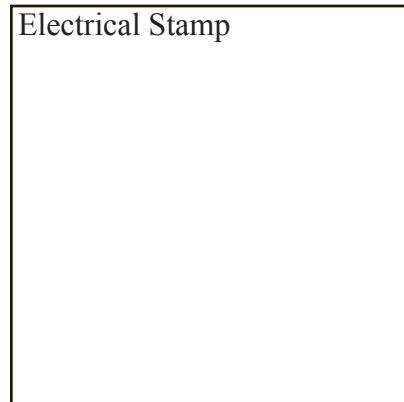
Architect Stamp



Mechanical Stamp



Electrical Stamp



IMPORTANT

Amico cannot commence manufacturing until one completely “Approved” copy of these Shop Drawings are returned to our attention.

THIS SHOP DRAWING BOOKLET INCLUDES:

	GENERAL PRODUCT SPECIFICATION(S)
	MANUFACTURING VERIFICATIONS
	ELEVATION DRAWING(S)
	MANUFACTURER WARRANTY STATEMENT
	INSTALLATION INSTRUCTIONS
	LISTING OF APPROVALS

MANUFACTURING OF THE PRODUCT(S) COVERED BY THIS SHOP DRAWING BOOKLET WILL NOT COMMENCE UNTIL ALL VERIFICATIONS ARE INITIALLED WHERE REQUIRED, AND INFORMATION PROVIDED WHERE REQUIRED.

*****IMPORTANT*****

The following statement forms an integral part of this shop drawing submittal. By approving and returning this submittal, the customer acknowledges and accepts the following statement.

THE INFORMATION HEREIN FORMS A “MANUFACTURING BLUEPRINT”, AND SHALL TAKE PRECEDENCE OVER ALL OTHER DOCUMENTATION, INCLUDING BUT NOT LIMITED TO, PROJECT SPECIFICATIONS, ADDENDA, AND DRAWINGS.

Specifications – Power Column

The Amico Alert-2 Power Column shall be manufactured by Amico Corporation, in accordance with these shop drawings and documents. The complete Power Column shall be UL listed.

1. Basic Construction

Enclosure shall be constructed of extruded, anodized aluminum alloy sections to provide a modular surface mounted unit. The unit shall be factory assembled to include mechanical and electrical components as shown on the plans and specifications and wired in accordance with Amico Corporation's shop drawings as herein indicated. Anodized aluminum facias shall be removable for access to individual components mounted within the console sections of the wall unit. Primary electrical conduit runs to the unit are provided by the electrical contractor and shall be accommodated by an upper terminal enclosure furnished as an integral part of the wall. All secondary wiring within the wall unit enclosure shall be enclosed in electrical conduit on each side of the enclosure provided by Amico Corporation and terminated in the appropriate sections in the upper terminal enclosures. All wiring shall be marked, color coded and to facilitate easy circuit identification.

Removable panels shall be finished with high-pressure plastic laminate on the outside face and a backing sheet on the reverse. The color of the plastic laminate shall be selected by the hospital or architect from standard color selections from Formica or Wilson Art.

2. Components

Medical gas station outlets. Medical gas outlets shall be as indicated in plans and specifications. Amico Corporation will factory install all outlets, manifold and tested in accordance with the outlet manufacturers requirements. Each outlet, piping and manifolding shall be pressure tested for 24 hours. The mechanical contractor will bring the primary supply lines of the medical gases to the singular

terminal connections at locations shown on the drawings.

Power outlets. Receptacles shall be the type and quantity as shown on the drawings and specified. 120 Volt, Hospital Grade shall be provided.

Chart lights / Night Light. Shall be switched, (where required), 4 watts, 120 VAC to provide light for reading records in a darkened room. The front of the light shall be louvered directed downward and located in front or side of the wall. It shall be complete with bulb.

Vacuum Bottle Slide. Shall be a 4 inch anodized aluminum device with bottom stop. It shall be installed on the wall as specified on drawings.

Internal ground bus. A screw type ground bus connection will be provided as required. The ground bus assembly shall also provide a positive means for grounding the wall

Switches. Shall be as shown on drawings, 120 VAC 15 or 20 Amp "Specification" Grade.

Grounding jacks. Externally accessible grounding jacks shall be provided in the Power Column unit, as shown in the shop drawings. The solid brass receptacle shall be enclosed in a non-conductive housing, shall be spring-loaded and shall be manufactured to the requirements of NFPA 99.

Lighting fixture. When specified, the overbed lighting fixture shall be provided complete with plastic laminate trim color to match the Power Column unit. Amico Corporation does not provide lamps.

Clock timer. When specified, an Amico Corporation Clock/Timer unit shall be provided and factory installed in the Power Column. The microprocessor based unit displays both time-of-day and elapsed time. The clock shall have an internal backup circuit that keeps the clock and timer functions running for at least 24 hours. The Clock/Timer unit shall have a provision for Code Blue input. The installing contractor shall perform wiring and electrical

actuation between the Code Blue and the Clock/Timer unit.

3. Provisions

Nurse call equipment. All nurse call equipment shall be furnished and installed by others as indicated in the plans and specifications. Amico Corporation shall provide a pull cord for use by the nurse call installer.

Code Blue. Code Blue equipment shall be furnished and installed by others as indicated in the plans and specifications. Amico Corporation shall provide a labeled pull cord for use by contractor.

Monitoring equipment. Monitor equipment shall be provided and installed by others. Amico Corporation shall provide a matching blank plate for the monitor receptacle to the monitor supplier when requested. The wall unit will include a factory-installed raceway and pull cord to accommodate the monitor wiring. Where specified, a Tilt Swivel Monitor Bracket and slide shall be provided to support the monitor.

Data/Computer interconnects. A data/computer system furnished by others shall be installed at locations as shown on the plans and specifications. Amico Corporation shall provide a matching blank plate for the computer-jack when requested. The wall unit will include a factory-installed raceway and pull cord to accommodate the computer system wiring.

Telephone Provisions. Shall include a ½" conduit with "Pull-cord" to junction box. Telephone Jack shall be installed and wired by contractor or local telephone company.

4. Accessories

Accessories shall be provided in the quantities and types as shown in the submittal. Accessories shall be installed by others in the locations as determined by the end user.

5. Installation

Mounting of the product shall be the responsibility of the installing contractor. This includes receiving, storage, erection, overhead bracing, clean up, touch

up, carton disposal etc. This contractor shall supply all necessary installation material including such items as tools, fasteners, caulking and electric lamps not supplied by Amico Corporation.

The electrical contractor shall be responsible for all electrical hook-up at service connection locations plus interconnect wiring on multi-section units. After the installation is complete the electrical contractor shall test equipment function plus electrical receptacles and grounding in accordance with local electrical code requirements.

The medical gas contractor shall be responsible for piping and hook-up of all medical gas services. In addition, hook-up of piping between sections on multi-section units shall be the responsibility of this contractor. The medical gas contractor shall be responsible for purging, pressure testing, gas identification and system certification in accordance with NFPA 99 or CSA-Z305.1.

Accessory items shall be installed in accordance with the manufacturer's instructions and shall be the responsibility of this section. The installation shall take place under the direction of the hospital. See accessories catalog for additional information.

Note: All Specifications are nominal and subject to change without notice.

AMICO VERIFICATIONS

WE CANNOT BEGIN PRODUCTION WITHOUT THIS INFORMATION

Please call _____ with any questions.
Tel: _____
Fax: _____

1) GENERAL

- Please initial thus verifying the quantity shown on each elevation drawing is correct. Additionally, where applicable, please identify in **RED INK** the number of “opposite” units required for each elevation (“opposite” shall be defined as mirror image”).
- Please confirm the quantity of “As Shown” and “Mirror Image” units required for each elevation:

<u>Total Qty</u>	<u>“As Shown”</u>	<u>“Mirror Image”</u>
------------------	-------------------	-----------------------

- Please initial thus verifying that all service and provision components are located as required on each elevation drawing. Please mark any corrections on the elevation drawing(s) in **RED INK**.
- All product covered by these verifications and related elevation drawings shall be built to manufacturer’s standard specification (copy enclosed); exceptions noted herein.
- Please provide the required on-site delivery date here: _____

Standard delivery shall be 8 - 10 weeks from factory receipt of “APPROVED” shop drawings (containing additional information where requested) and any applicable Division 15 & 16 supplied components.

Delivery date identified above shall not extend beyond the quoted delivery by date of : _____

- When elevation drawings reference specific room numbers, the manufacturer will endeavor to label product-shipping cartons with the appropriate room number. It remains, however, the sole responsibility of the installing contractor to ensure all products are installed in the correct location(s) within the correct room(s).

2) MOUNTING HARDWARE / SPECIAL REQUIREMENTS

- Headwalls are shipped complete with a wall-mounting bracket, from which the headwall is suspended prior to final wall attachment. Hardware required to secure mounting bracket to wall, and headwall to wall, shall be supplied by others to suit wall type.
- Anti-sway ceiling structure required for installation of Power Columns shall be designed, supplied and installed by others.

3) PRODUCT COLORS

- Line voltage devices shall be factory supplied, installed, and wired with #10 or #12, stranded copper wire (THHN, 600 volt insulation) for hot and neutral (black and white). Grounds shall be #10, type R, THHN stranded copper wire (green). All ground conductors shall be installed in conduit.
- Please initial thus verifying the power source is 120/208 volts.
- Please select one of the following:
 - Circuits shall be wired with shared neutrals.
 - Circuits shall be wired with individual neutrals.
- Please select one of the following:
 - All receptacles shall be mounted with ground pin down.
 - All receptacles shall be mounted with ground pin up.
- Provisions for “future” line voltage electrical devices shall consist of back boxes, conduit from back boxes to junction box, and a blank stainless steel cover plate.
- All line voltage device wiring shall be terminated within a junction box located within the headwall as indicated on the elevation drawings. All connections to hospital services shall be made by others.
- Overbed light referenced. Hospital grade overbed lights should include a safety switch leg for integration within the power circuit for an electric bed receptacle. When provided, wiring of such circuit shall be the responsibility of others. If provided, please identify in **RED INK** which receptacle on the headwall will be connected to this circuit.

When wiring a bed receptacle to an overbed light safety switch leg, we recommend using a simplex receptacle and labeling it “for bed use only, not for life support equipment”.

6) LOW VOLTAGE PROVISIONS

- Provisions only, consisting of back boxes and conduit, will be supplied for all low voltage devices. Devices shall be supplied and site installed by others. Please circle the required opening and back box gang size required for each of the following low voltage provisions:

<u>Device</u> _____	<u>Opening Size (gang)</u>				<u>Back Box Size (gang)</u>			
Nurse Call (NC)	1	2	3	4	1	2	3	4
Nurse Assist (NA)	1	2	3	4	1	2	3	4
Code Blue (CB)	1	2	3	4	1	2	3	4
Telephone/Data (T)	1	2	3	4	1	2	3	4

**SHOP DRAWINGS RECEIVED WITHOUT THIS INFORMATION WILL BE RETURNED.
PRODUCTION WILL NOT COMMENCE WITHOUT THIS CRITICAL INFORMATION.**

- Provisions for “future” line voltage electrical devices shall consist of back boxes, conduit from back boxes to junction box, and a blank anodized aluminum cover plate.

7) MEDICAL GASES/VACUUM

— Medical gas terminal units (outlets) shall be _____ console style outlets

— Headwall manufacturer shall provide all medical gas terminations with either ½” or 3/4” diameter type” “K” seamless copper pipes, factory installed. Factory installed copper pipes shall be cut to length and terminate as indicated on elevation drawings.

— Connection between hospital pipeline systems and headwall pipe stubs shall be brazed on site by others, in accordance with local building codes, project specifications, and NFPA 99 and /or CAN CSA Z305.1 (latest edition).

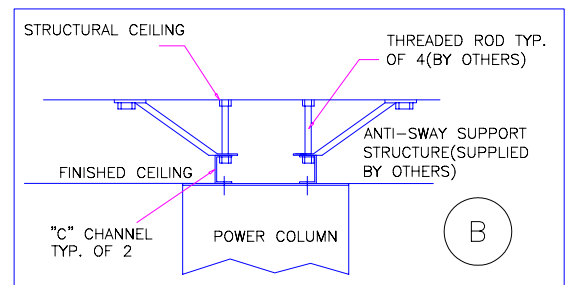
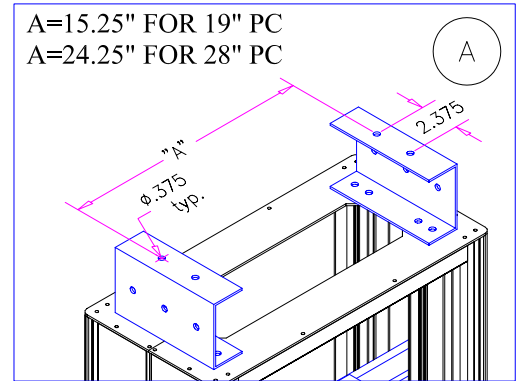
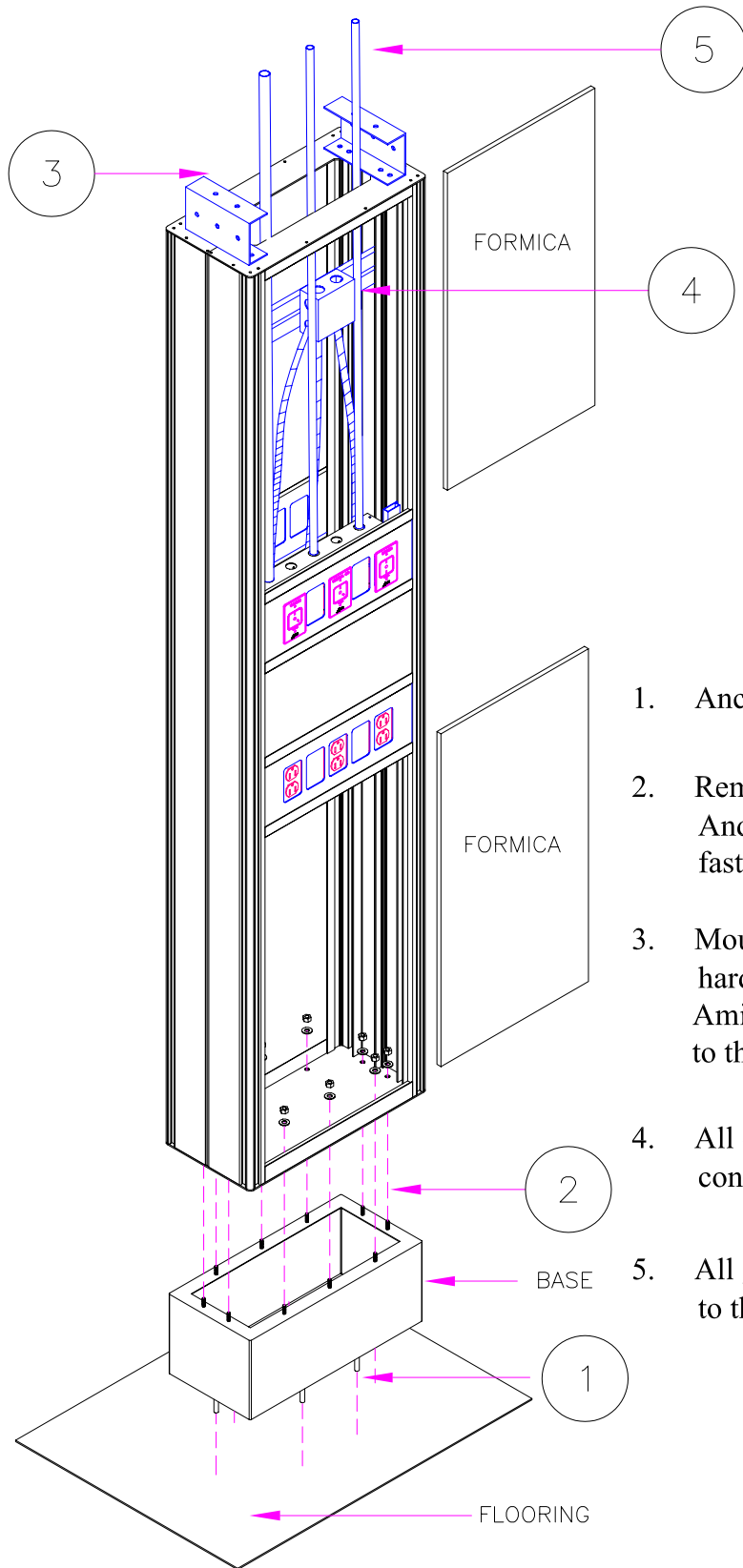
8) OTHER

August 28, 2000

WARRANTY POLICY

1. Amico Corporation warrants its Medical Gas Pipeline Equipment to be free from defects in **material** and **workmanship** for a period of twelve (12) months from the date of shipment. Within this period Amico will repair or replace any part on site, or at the factory, which is proven to be defective at Amico's cost.
2. Furthermore, Amico will warrant its **material** to be free from defect for an additional period of four (4) years (five (5) years from the date of shipment). Within this period, Amico will replace any **part**, at no charge, which is proven to be defective. Shipping and Installation costs after the first twelve (12) months will be borne by the Customer.
3. This warranty is valid only when the product has been properly installed according to Amico specifications, used in a normal manner and serviced according to factory recommendations. It does not cover failures due to damage which occurs in shipments or failures which resulted from accidents, misuse, abuse, neglect, mishandling, alteration, misapplication or damage that may be attributable to acts of God.
4. Amico shall not be liable for incidental or consequential damages resulting from the use of the equipment.
5. All claims for warranty must first be approved by Amico's Service Department (service@amico.com or 1-888-323-3209). A valid Return Goods Authorization (RGA) number must be obtained from Amico prior to commencement of any service work. Warranty work, which has not been pre-authorized by Amico, will **not** be reimbursed.

POWER COLUMN MOUNTING INSTRUCTIONS:

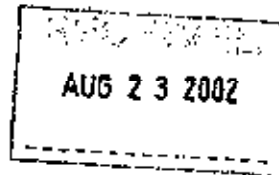


1. Anchor Base of the Power Column to the floor.
2. Remove front formica panels as shown. And using the provided 1/4" nuts & washers, fasten Power Column to Base.
3. Mounting structure to the structural ceiling and all hardware needed for that are by others (Detail B). Amico provides two "C" channels attached to the PC. (See detail A for dimensions.)
4. All electrical are pre-wired to junction boxes and contractor should supply power to junction box.
5. All gas pipes must be rough-in from the ceiling to the Power Column. (As shown on top)

Northbrook, Illinois • (647) 272-8800
Metairie, New York • (631) 271-6200
Santa Clara, California • (408) 985-2400
Research Triangle Park,
North Carolina • (919) 543-1400
Camas, Washington • (360) 817-5500



AMICO CORP
MR S JAFS
21-121 GRANTON DR
RICHMOND HILL
ON L4B 3N4 CANADA



RE: Project Number(s) - 02NK39938

Your most recent Certification is shown below. You may also view this information, or a portion of this information (depending on the product category), on UL's Online Certifications Directory at www.ul.com/database. Please review the text and contact the Conformity Assessment Services staff member who handled your project if revisions are required. For instructions on placing an order for this information in a 3 x 5-inch format, you may refer to the enclosed order form for UL Card Service.

KEZR August 12, 2002
Prefabricated Medical Headwalls and Medical Supply Units

AMICO CORP
21-121 GRANTON DR RICHMOND HILL, ON L4B 3N4 CANADA

E192931

Medical headwall, Medical headwall with gas stations.

Medical headwall, Model W-BED-LOCATOR Bed locator.
Medical headwalls with gas stations, Models C-COL-MAN, C-COL-PNE, C-COL-STIA, C-COL-STIA-LT Ceiling columns.
Model E-CON-XX Console unit.
Model E-PEDESTAL Floor pedestal.
Model W-HWXX-0XT-X-XX Horizontal wall.
Models W-PCXXFL-XXX, W-PCXX-XXX-XXX Power columns.
Reflection Collection series Labour Delivery Roomset (LDR)
Model W-FWXXFL-XXX Vertical wall.
XX - Represents the dimension in inches
XXX - General Core, Special Core or ICU.

LOOK FOR LISTING MARK ON PRODUCT