

SPECIFICATIONS:

The Amico ArtWall is a medical gas and electrical service assembly that is installed in the wall of a patient room, where the delivery of medical gases and electrical services are discretely hidden behind a sliding framed print.

The framed print shall move horizontally to the left or to the right, or up diagonally to the left or to the right, to expose the medical gases and electrical services. A sliding rail is used for this movement.

A guide provides additional stability when fully extended. The sliding rail can be easily detached and re-attached. A metal mounting plate shall be provided for mounting of framed prints. Medical gas outlets shall be recessed swivel mount as indicated on the contract drawings.

The recessed unit shall allow for the use of detachable flowmeters and suction regulators for concealed bedside storage. The medical gas outlets shall allow for the swivelling of devices. Optional electrical receptacles shall be provided as indicated on the contract drawings and installed in the unit.

The rough-in box is 16 gauge steel with a textured off-white powder coat paint finish. The rough-in is easily installed in the stud work of the wall. The finished assembly is installed on the rough-in assembly after medical gas and electrical services have been connected to building services. Medical gas piping for each gas shall extend 6" (152 mm) above the unit for connection to the hospital medical gas pipeline.



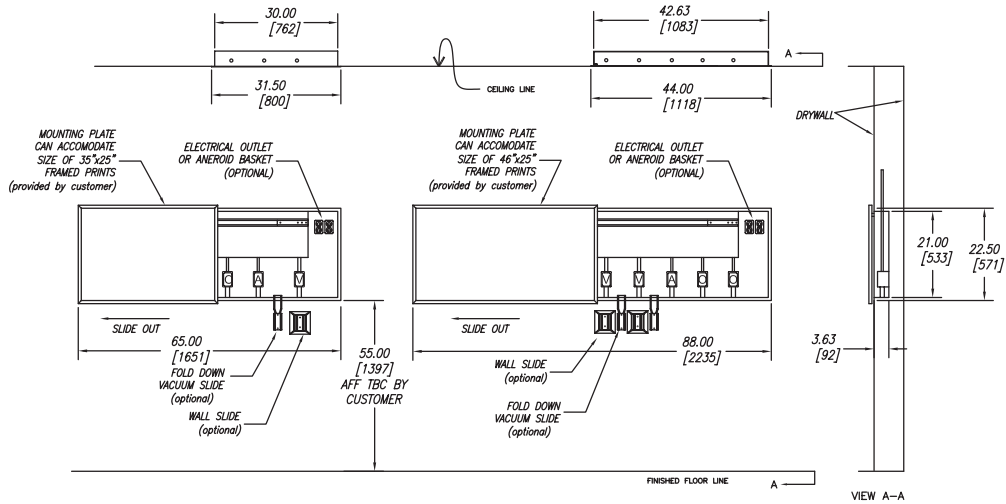
- Accepts all 4 types of Amico Outlets; Ohmeda Compatible, Chemetron Compatible, Puritan Bennett Compatible and DISS
- Hides medical gas outlets and equipment for an uncluttered appearance
- Sliding ArtWall picture is available in horizontal left hand or right hand, or diagonal left hand or right hand configurations
- Available in standard 3 or 5 gas configurations
- Accepts framed prints 35" (889 mm) wide x 25" (635 mm) high for the 3 gas and 46" (1,168 mm) wide x 25" (635 mm) high for the 5 gas

PROJECT:

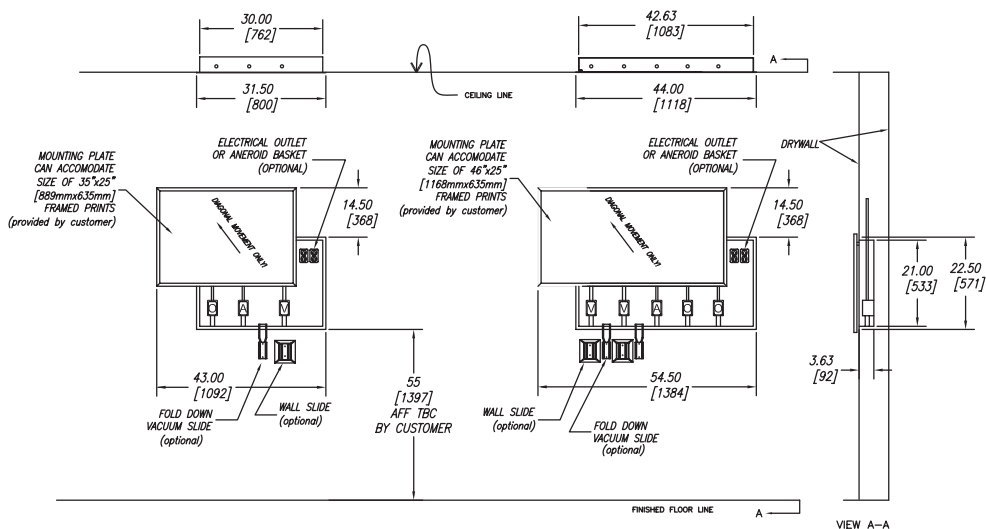
MOUNTING & DIMENSIONAL DATA

Horizontal Movement

inch
[mm]



Diagonal Movement



MODEL NUMBERS

W-AW-3HR-XXXXXE

3 - Three Gas
5 - Five Gas

R - Right Movement
L - Left Movement

H - Horizontal Movement
D - Diagonal Movement
E - Electrical Receptacle
D - Dual Electrical Receptacle

The X defines the Gases:

Oxygen = O
Medical Air = A
MedVac = V
Nitrous Oxide = 2
Nitrogen = N

ArtWall Accessories

Fold Down Vacuum Slide:

W-ART-SLIDE

Wall Slide:

O-WALSLIDE

Aneroid Manometer w/ Basket:

W-A-AMANOM-CB

DISTRIBUTED BY: